

Installation of Trunk Lid Popper

Tools required for installation:

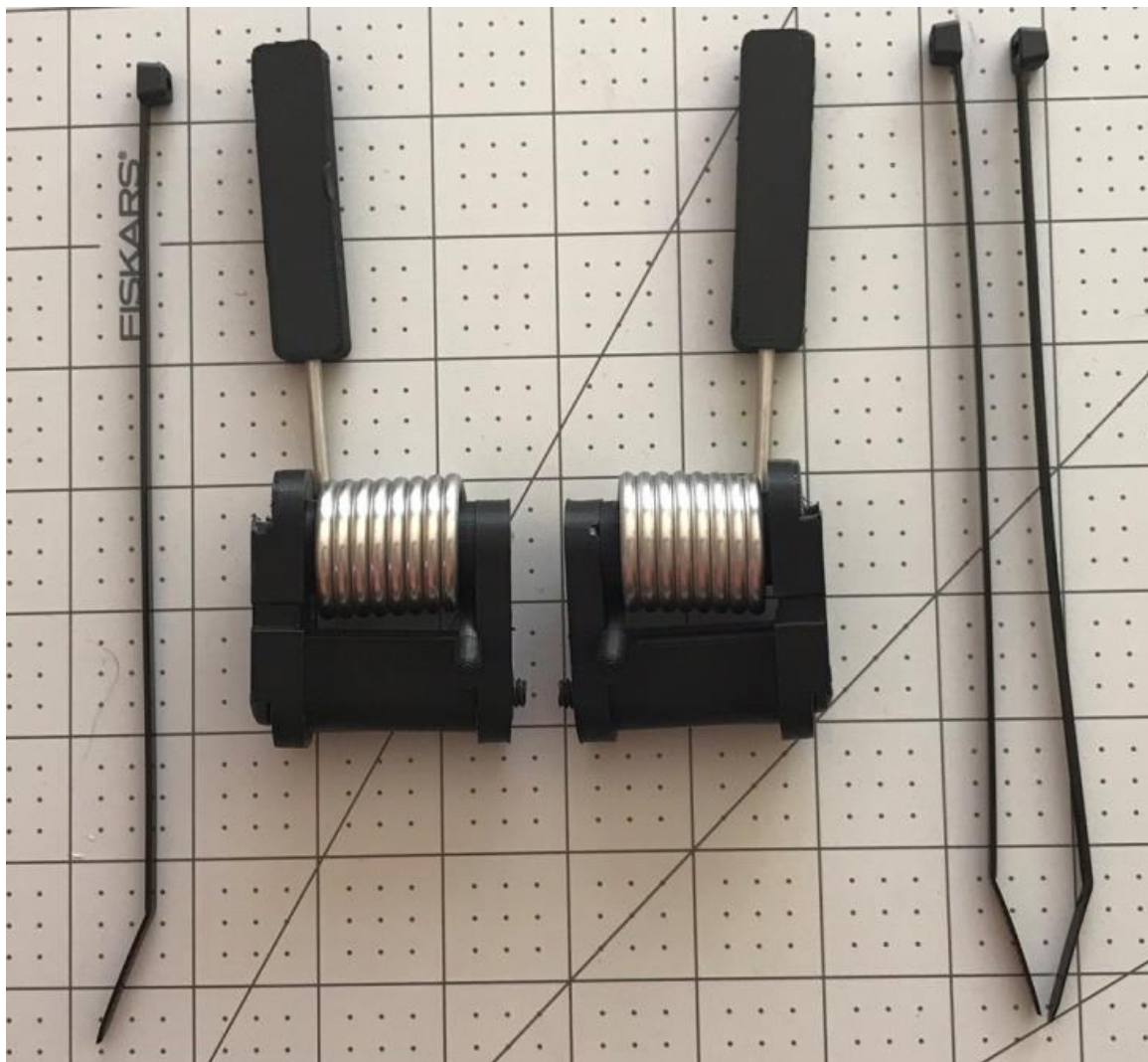
Philips screw driver #3

Pliers

Small flat driver (optional, to release cable clip)

Step 1

Separate the springs for installation on the left and right side. Remove the black 2" screws from each unit.

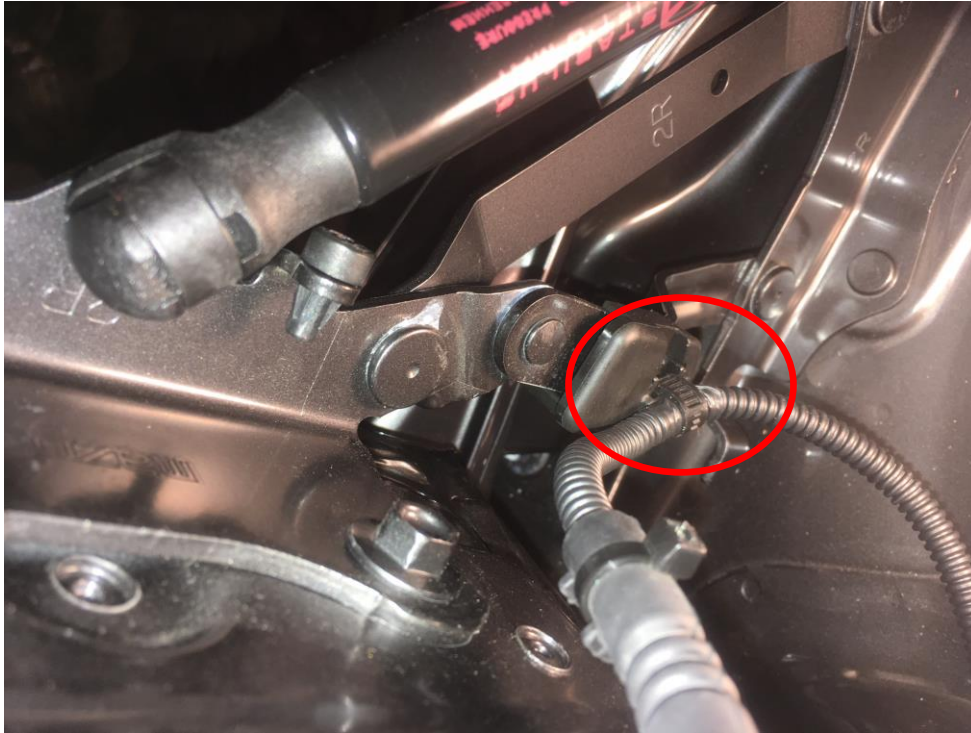


10/23/2017

Step 2 (For car with satellite radio only) All others proceed to Step 3

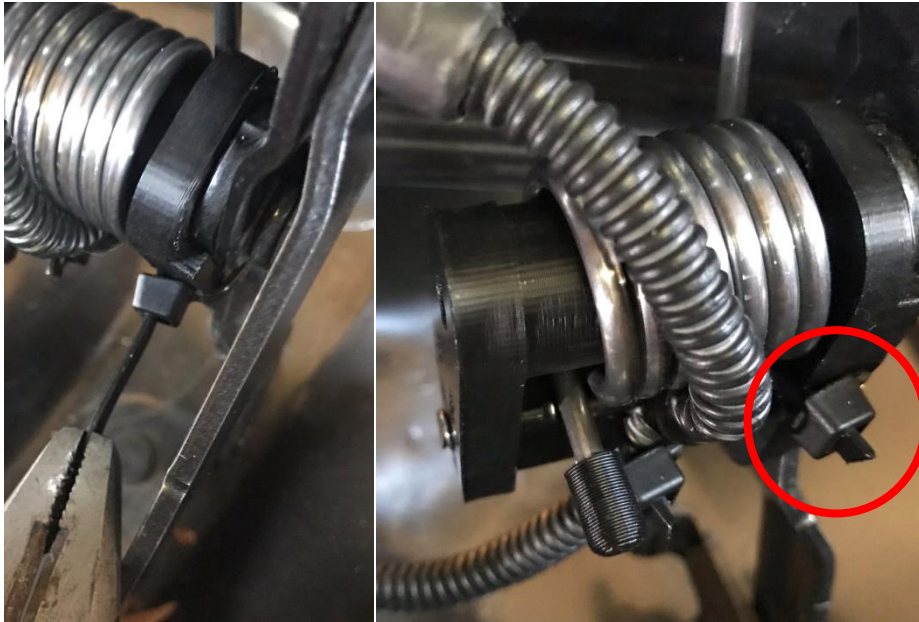
Remove the cable clamp (on passenger side). The clamp assembly needs to be removed from the cable.

Using a small flat screw driver, push down the little flap on the zip-tie and open the zip-tie loop.



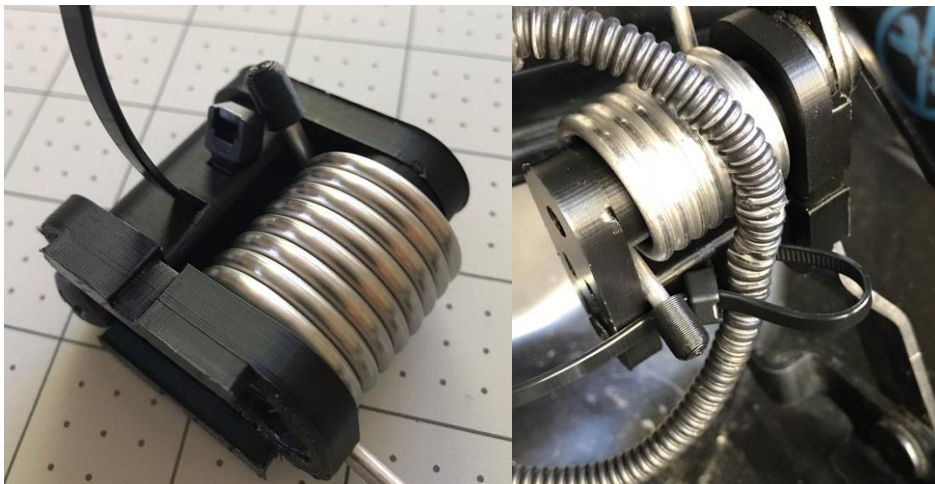
Step 3

Attach the spring assembly unit, using the 2" black screw (removed on step one). Tighten the screw. For extra security, you can loop the zip-tie around the base (between spring and screw), and tighten it with the pliers. Cut excess zip-tie.

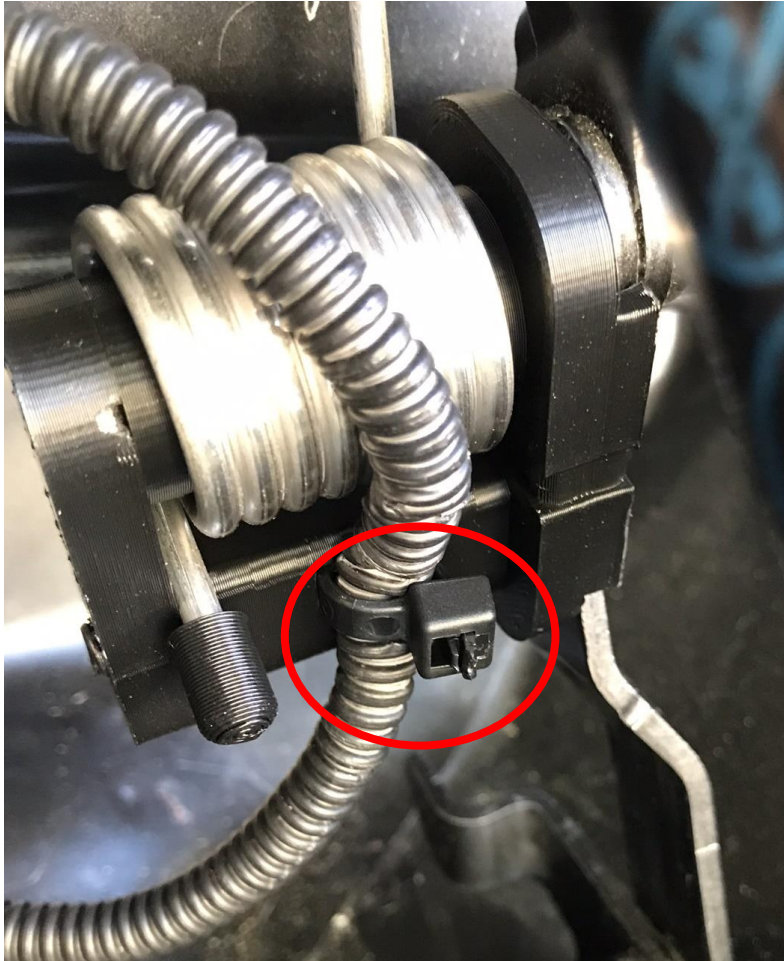


Step 3-1 (For car with satellite radio only)

Using the provided releasable zip-tie, attach the cable as shown on picture bellow. It is important to keep the cable exactly in this location, to avoid cable jam when the lid is closed.



10/23/2017



Cut the excess zip-tie.

10/23/2017

Step 4

Install the spring on the driver side (following previous steps)



Slowly close the trunk lid and observe if there's any obstruction when closing. Once you've verified that the trunk closes correctly (with no obstructions), close it normally, which may require a little more force. Open the trunk with the key or interior button, to check if it works correctly.